

# VA Assist Enterprise/S

for VisualAge® Smalltalk

Now includes  
WidgetKit Controls!

New Power Tools

UI Assistant

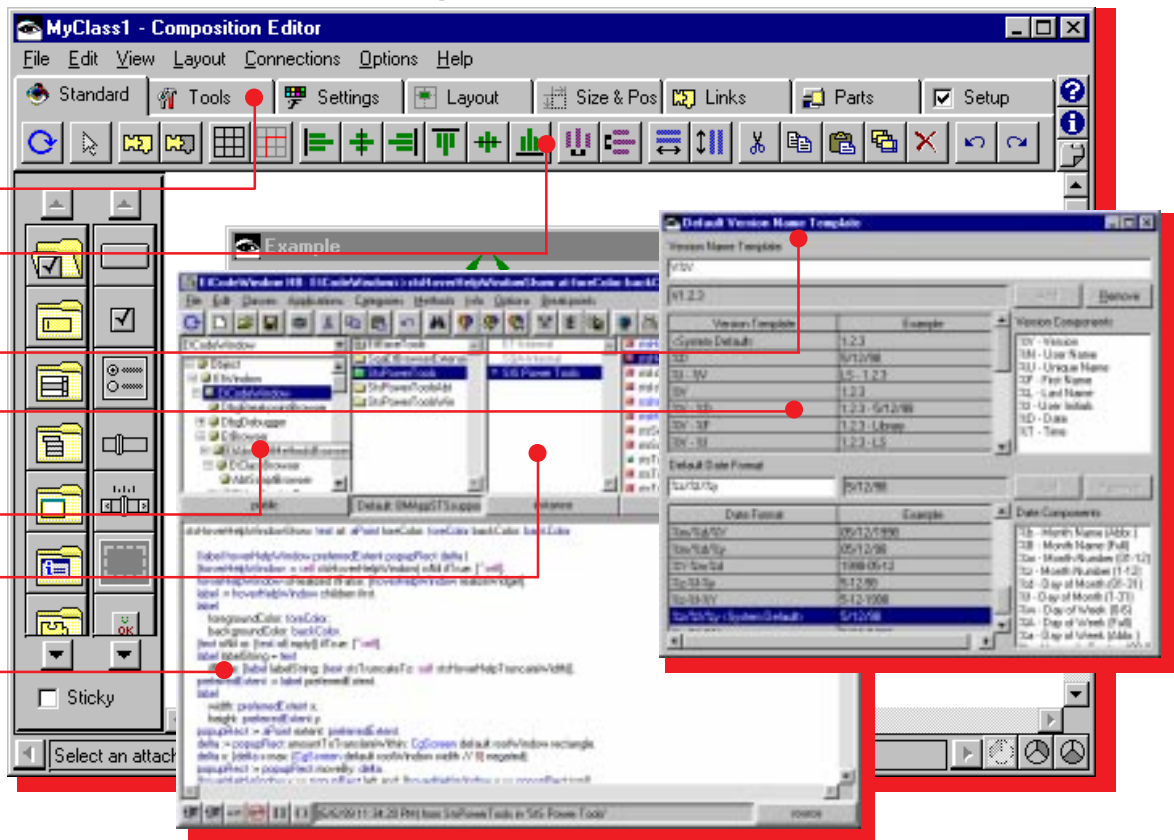
Version Name  
Templates

ENVY Power Tools

Browser  
Synchronization

Browser Tool Bar

Color Syntax  
Highlighting



## Triple Your VA Smalltalk Productivity!

- 100's of new features & commands
- ENVY power tools & enhancements
- Powerful change propagation tools
- GUI building productivity tools
- Universal Drag/Drop in all browsers
- Version renaming & templates
- Morph widgets from one type to another
- Dynamic & batch-oriented spell checking
- Recursive versioning
- Enhanced debugger & Inspectors
- Color syntax highlighting

VA Assist Enterprise/S™ adds major new features to VisualAge Smalltalk. "Assist/S" gives you an extensive set of new power tools for ENVY management, GUI building, and code development...and it's seamlessly integrated into the familiar VisualAge Composition Editor environment.

Assist/S allows you to build applications and GUI's far more easily, streamlining most common editing operations and adding many timesaving features to the Composition Editor and browsers.

Assist/S also eases your ENVY library management tasks and greatly simplifies configuration map, version, and application management.

# Instantiations

# What's in VA Assist Enterprise/S?

## ENVY Improvements

Prerequisite and dependent path determination-find out why an application is listed as a prerequisite or dependent

Recursive application, subapplication and class versioning - version an entire application in a single step!

Powerful change propagation tools - modify an app and update all affected maps in one step

Super user features - manipulate editions and versions regardless of ownership

Version renaming commands - baseline app names with ease!

Customizable version name templates - easily establish a corporate version name standard

New importing and exporting commands in the configuration maps browser

String search within individual classes, class hierarchies or the entire system

Locate Application - locate the Configuration Maps that hold onto the selected application

Locate Dependents - locate the configurations dependent on the selected specific configuration

Release All Latest - releases the latest editions of the included applications

Browse Changes Including Required Maps - browse the changes between any two config map editions including any changes in their required maps

## UI Assistant

Some of the Tools page features are Select All, Select All in Same Class, Bring to Front, Send to Back, and Inspect.

The Settings page allows you to change common part styles without needing to access the settings view. Style changes can be applied to multiple widgets simultaneously.

The Layout page includes attachment styles that can be applied to one or more widgets with a single mouse click. Lock a group of widgets to the lower right corner of the window with one mouse click!

The Size and Position page has a over dozen options such as Set Size and Position, Alignment, Move and Size by Pixel.

The Links page gives you a dozen options for displaying and filtering displays of links. This lets you concentrate on just the event or attribute connections you're interested in.

## Code Development Features

Universal Drag/Drop in all browser panes

Dynamic & Batch-Oriented Spell Checking - catch spelling errors and common typos instantly

Customizable toolbars for all code browsers & the UI Assistant

Fully customizable color syntax highlighting - dozens of sample color schemes provided

Abbreviation expansion - reduce frequently typed expressions to a couple of keystrokes

Automatic tracking of recently modified scripts

Senders/Implementors in pop-up text menu

Variable scoping on Senders/Implementors - root application, dependent applications, selected applications

Advanced editing features - comment/uncomment, indent/unindent, auto indent, insert matching brackets, etc.

Dozens of additional power user features added to the code browsers, applications manager and configuration maps browser

## WidgetKit/Controls™

A library of 18 new widgets including a columnar list box, table widget and hierarchical list, customizable image buttons, toggles and value sets; vertical, horizontal and circular gauges, and data aware spin buttons.

## Other Great Complimentary Products

**WidgetKit/Business Graphics™** gives you a wide variety of 2-D & 3-D charts and graphs that add substance and sizzle to your programs.

**WidgetKit/Professional™** a library of powerful spreadsheets, a table editor, multi-column list boxes, and many other useful widgets for inclusion in your apps.

TO ORDER or for Info  
Call (800) 808-3737 or  
Fax (503) 612-9499

For complete info visit our website:  
<http://www.instantiations.com/assist>  
30 Day Free Trial Available



# Instantiations